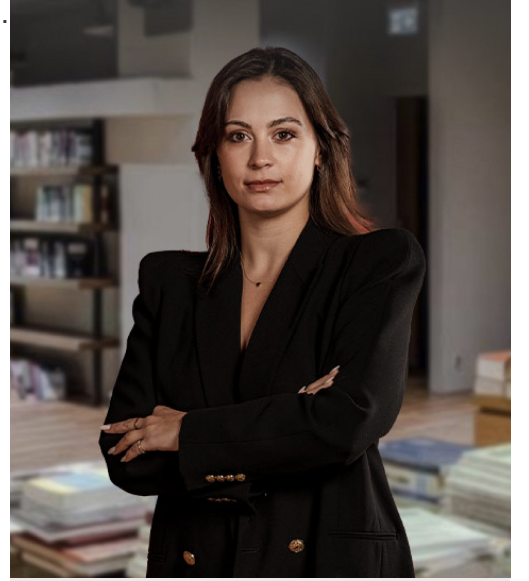


MOROĞLU ARSEVEN

Simge works primarily in the areas of complex civil and commercial litigation. She specifically focuses on corporate consulting and commercial disputes. Simge assists clients in all phases of litigation and compliance procedures, whether at home or abroad.

Simge is experienced in following up the processes of dispute resolution, litigation, contract, collection of receivables, protection of assets before the courts by focusing on the subjects such as contractual claims of its clients, compensation claims, receivables, bankruptcy and restructurings and consumer disputes. She provides consultancy on the preparation and examination of her clients' corporate documents and contracts. She personally follows the relevant processes in order to finalize the disputes, facilitate the access of her clients to their assets and protect them. Additionally, she is giving written and oral advice to professional companies on various legal matters and preparing briefs and memos upon request by the clients.

Simge also monitors the employment contract and termination processes. She provides consultancy to clients on labor law, and plays a role in the preparation of documents such as contracts, petitions and warnings. She procure oral and written consultancy to her clients regarding disputes arising from the business relationship and represents her clients in mediation and court processes.



**SİMGE
ONATIR**
Associate

sonatir@morogluarseven.com
T: +90-212-377-4700
F: +90-212-377-4799

Admissions

- Istanbul Bar Association (2019)

Education

- MA, Istanbul Bilgi University, Economics Law (ongoing)
- LL.B. Law, Yeditepe University, Faculty of Law (2014)

Languages

- Turkish
- English

Memberships

- International Association of Law Schools
- Yeditepe University Faculty of Law Club

